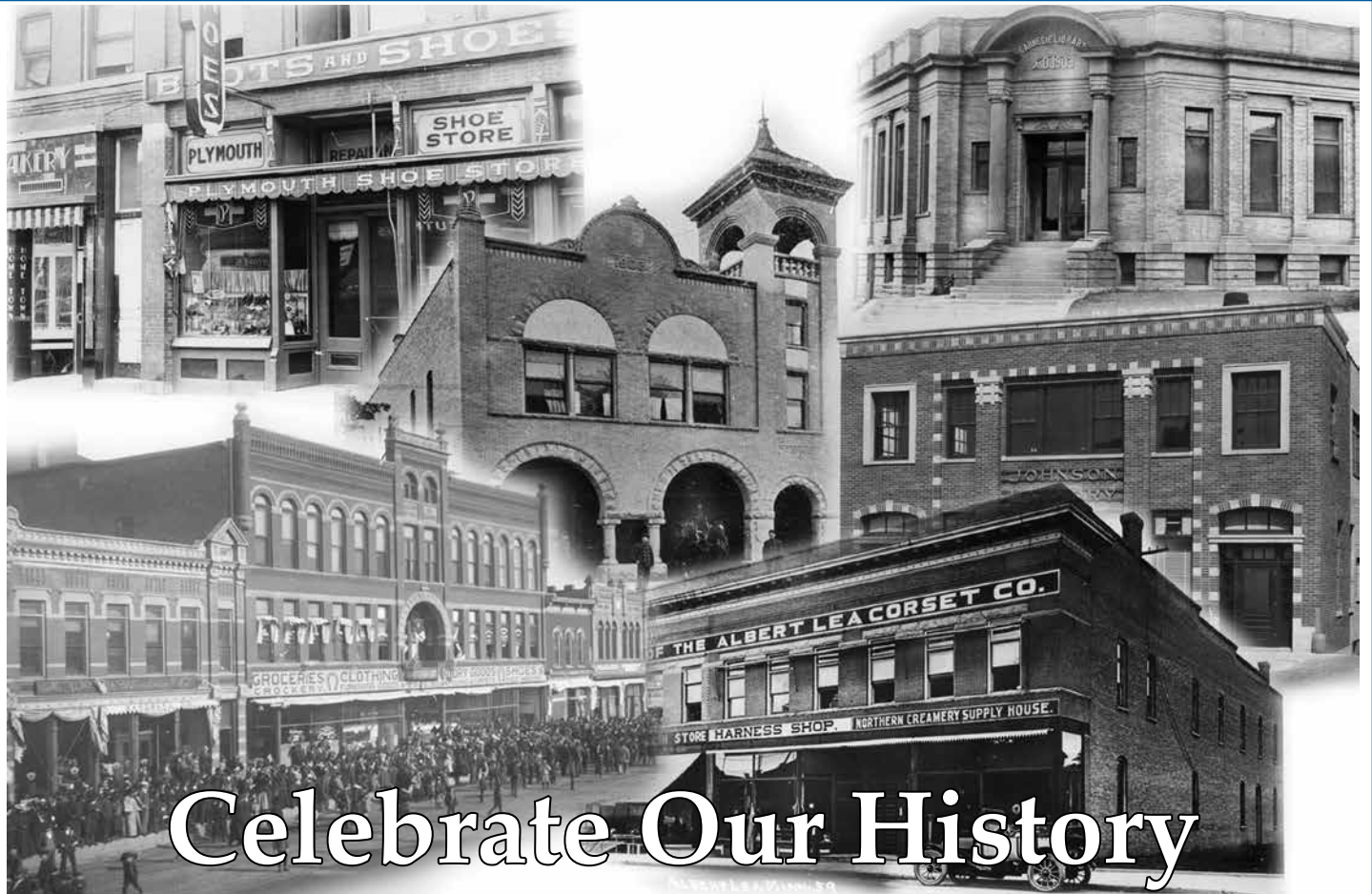




September 2017

# MONTH-LEA



## Celebrate Our History

The City of Albert Lea will host the Statewide Historic Preservation Conference September 13th - 15th. The event will include educational and field sessions, and will be attended by preservationists from all over the state.

This is an opportunity to showcase the city's history, its commitment to preservation and natural beauty. The sessions will take place at the American Legion, the Marion Ross Performing Arts Center and City Hall. Tours of the city will also be offered. Cheri Register, a native Albert Lean and author of "Packinghouse Daughter," will be the keynote speaker.

As part of the conference, the community group Experience Albert Lea, is hosting a hometown harvest dinner on Thursday, the 14th, at 5:30 pm, turning Broadway into a big table where residents can mix with attendees. If you are interested in the dinner, tickets are available (\$8) at the Chamber of Commerce and Convention & Visitors Bureau.

Conference registration can be done through the City Manager's office at (507) 377-4330 or by visiting <http://www.mnhs.org/shpo/conference/>

This project is financed in part with funds granted to the city of Albert Lea from the National Park Service, U.S. Department of the Interior.

Albert Lea Hockey Association & Albert Lea Parks & Recreation

# HOCKEY REGISTRATION

Sept 19th – 6:00 to 8:00 PM • Sept 21st – 6:00 to 8:00 PM • Sept 23rd – 9:00 to 11:00 AM

## HOCKEY REGISTRATION ALBERT LEA CITY ARENA

ALHA Traveling Teams (as of July 1)

Girls U-10 .....	10 & under
Girls U-12 .....	12 & under
Girls U-15 .....	15 & under
Squirts .....	9-10 years
Peewees.....	11-12 years
Bantams .....	13-14 years
Jr. Gold .....	High School

Registration for USA Hockey Membership (\$50) is online at [www.usahockeyregistration.com](http://www.usahockeyregistration.com). See our website for more information [www.cityofalbertlea.org](http://www.cityofalbertlea.org).

## Park & Rec Mite Hockey

Mite 1 - Pre-K and older  
new to hockey.

Mite 2 - 1st graders and other  
players that have been in  
hockey at least one year.

Mite 3 - Primarily 2nd and 3rd  
graders and squirt age players  
who do not wish to travel.

\$50

You may also register online for Park &  
Rec Mite Hockey at  
<https://cityofalbertlea.revtrak.net>  
\$50 Fee  
\$50 Equipment rental



# Albert Lea Public Library

211 E. Clark St. • [www.alplonline.org](http://www.alplonline.org) • (507) 377-4350

Sun.: 1 to 5 p.m., Mon. - Thu.: 9 to 7 p.m. and Fri.: 1 to 6 p.m.

Presented by Friends  
of the Albert Lea Public Library

## MILT OST

**Tuesday,  
Sept. 19  
at 7 p.m.**

**Council Chambers**



This event begins with the annual meeting of the Friends. The author's program will follow. Free for members. Join for \$5 at the door. Free to students with current school I.D.

## Check out our computer classes!

### Intro to the Internet\*

- Wed., Sept. 13 @ 2 p.m.
- Wed., Oct. 11 @ 2 p.m.

### Intro to Facebook\* \*\*

- Wed., Sept. 20 @ 2 p.m.
- Wed., Oct. 18 @ 2 p.m.

\*Must know how to use a mouse and click.

\*\*Must have a working email address and know your login information (id & password).



## Children's programs resume Sept. 11

Storytime: Mon. & Tue. at 10:30 a.m.  
Music & Movement: Thu. at 10:30 a.m.  
Night-time Storytime: Thu. at 6 p.m.

